

Foreign Language Online Diagnostic Assessment (ODA) Language Testing Instructions at the Academic Studies Center (ASC) (Room 200 in the Continuing Education Building)

Test Times

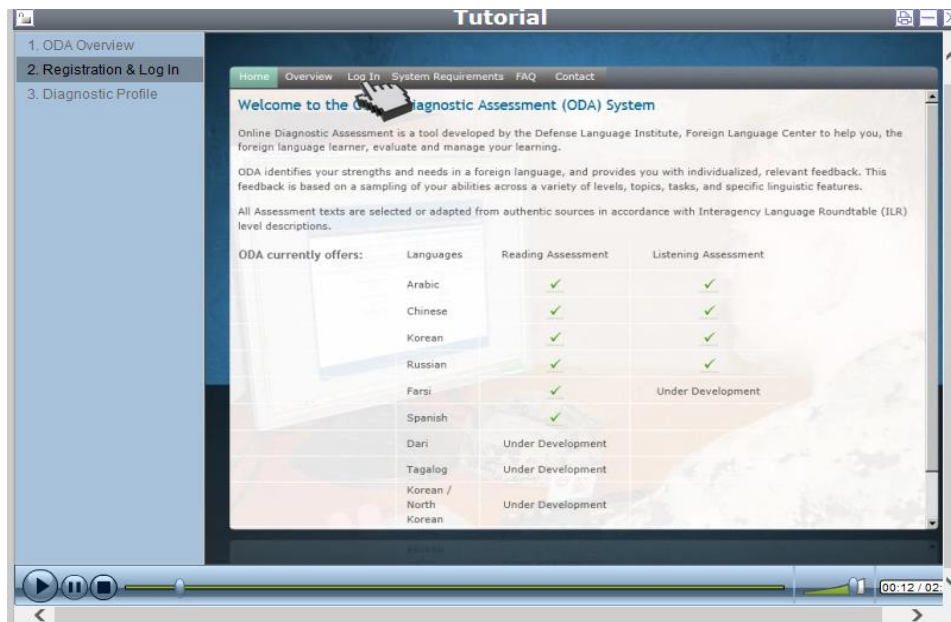
Monday - Thursday: 8am - 1pm or 1pm - 6pm

Friday: 8am - 1pm

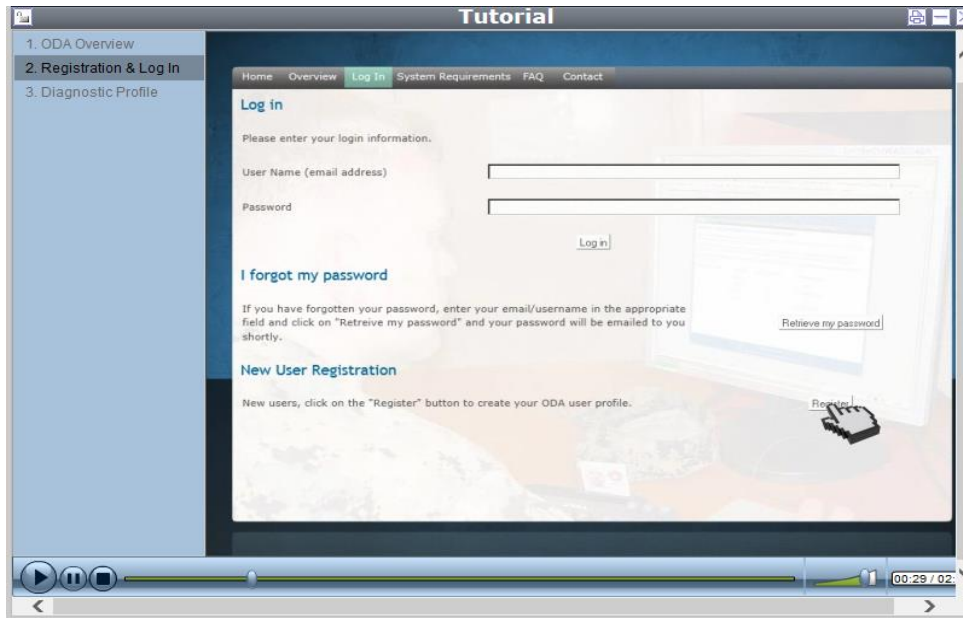
Student Requirements/Responsibilities

1. Please call Crystal Jones at (910) 938-6775 to schedule a time to come in to take the ODA.
2. On your scheduled day of testing at the Academic Studies Center, upon completion of your test and **before you log out of the ODA website**, request a staff member to assist you with PRINTING your ODA results.
3. **Prior to** reporting to the Academic Studies Center for your ODA testing, follow the below instructions to create your ODA account:

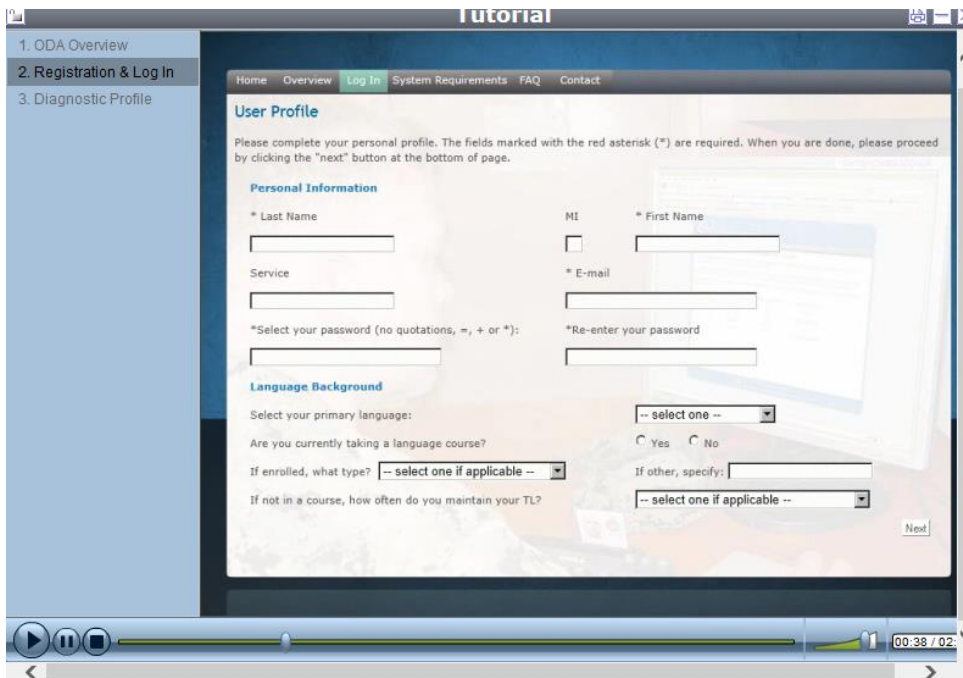
Go to <http://oda.dliflc.edu/> and click on "Log In" at the top of the page



Click on "Register" under the New User Registration section at the bottom of the page.



Complete the User Profile section (your email will become your username to access the site)



User Profile Page

- Civilians – Under service, type N/A.
- Under "primary language", select the language whose reading and listening skills you want evaluated.
- Answer the language background questions as best you can.

Click "Next" to proceed to the second part of the registration process
Complete the User Profile, part 2

User Profile, part 2

Language Testing

Have you taken a proficiency test in your target language before? Yes No

Enter the level for each modality in which you have received a rating:

Reading: Listening: Speaking:

Which test did you take? -- select as applicable -- If other, specify: _____

When did you take the test? -- select one if applicable --

User Profile Page, Part 2

- Under "which test did you take", select 'Other'.
- Under "If other, please specify", enter N/A.
- Under "when did you take the test if you have never taken a Foreign Language proficiency test", select 'more than a year ago'.

Once you have submitted the second part of your user profile, you can Log Out.

When you arrive at Coastal on your scheduled test date, go to <http://oda.dliflc.edu/> and click on "Log In" at the top of the page.

Welcome to the Diagnostic Assessment (ODA) System

Online Diagnostic Assessment is a tool developed by the Defense Language Institute, Foreign Language Center to help you, the foreign language learner, evaluate and manage your learning.

ODA identifies your strengths and needs in a foreign language, and provides you with individualized, relevant feedback. This feedback is based on a sampling of your abilities across a variety of levels, topics, tasks, and specific linguistic features.

All Assessment texts are selected or adapted from authentic sources in accordance with Interagency Language Roundtable (ILR) level descriptions.

ODA currently offers:

Languages	Reading Assessment	Listening Assessment
Arabic	✓	✓
Chinese	✓	✓
Korean	✓	✓
Russian	✓	✓
Farsi	✓	Under Development
Spanish	✓	
Dari	Under Development	
Tagalog	Under Development	
Korean / North Korean	Under Development	

Click "Take ODA" the top of the page.

Select Language

Arabic Balochi Chinese Dari Farsi

French Iraqi Korean Korean/North Korean Levantine

Pashto Portuguese Russian Serbian/Croatian Somali

Spanish Tagalog Urdu

Select Skill

Reading Listening

Select Your Starting Level ?

L1 L1+ L2 L2+ L3 Don't know

Online Diagnostic Assessment

- Select the test language
- Select the L1 starting level
- Select start and your ODA test will begin.
- Please note that the test will keep asking more difficult questions, so the longer it takes you to complete the test very likely indicates that you will score higher proficiency levels.